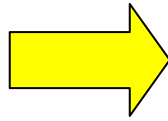


This simple guide will help you to install Choose and Tell Nursery Rhymes. By following these easy steps you will be up and running in a matter of minutes.

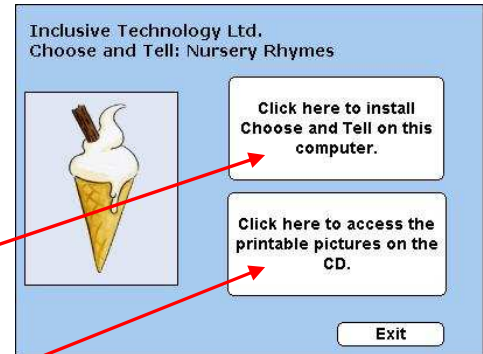


Step 1:

Firstly, switch on the computer. Once your computer has booted up you can insert the Choose and Tell CD into your CD Rom drive.

Step 2:

This screen should now appear:
If this screen does not appear please turn to page 4 of this guide.



Click here to start your installation.

Click here to view pictures of the game which can be printed as an additional learning aid.

Step 3:

Once you click to start the installation this screen will appear:

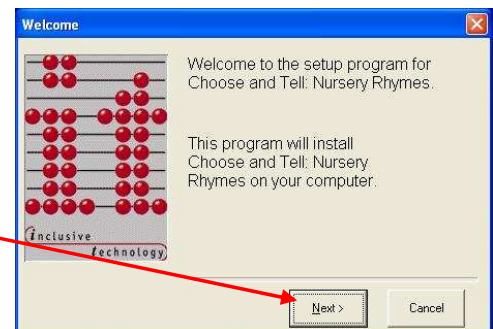
Here, you can choose which language you want the game to use. In this case, check that *UK* is selected and then click *OK*.



Step 4:

This screen will now appear:

Click *Next* to continue.



Step 5:

This screen will now appear:

This screen allows you to choose where the game is copied to. If you don't know where to copy the game to then just click the *Next* button.



Step 6:

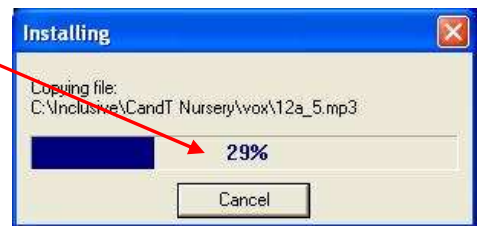
This screen should now appear:

To continue the installation click the *Next* button.



Step 7:

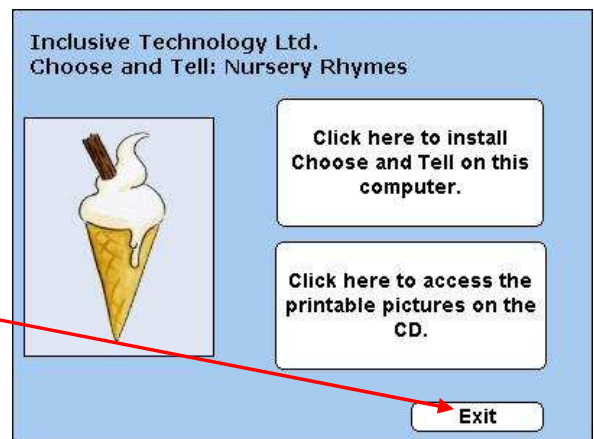
This screen will appear. Let the blue line reach 100% and do not click *Cancel*. Choose and Tell Nursery Rhymes will now be copied to your computer. This means that when you play Choose And Tell Nursery Rhymes you will not need to insert the CD into your computer. However, keep your CD safe in case you ever need to copy Choose And Tell Nursery Rhymes onto your computer again.



Step 8:

This screen will now reappear.

Click *Exit* and the screen will disappear.



Step 9:

You can now run Choose and Tell Nursery Rhymes anytime by clicking the *Choose and Tell Nursery Rhymes* icon on your desktop.

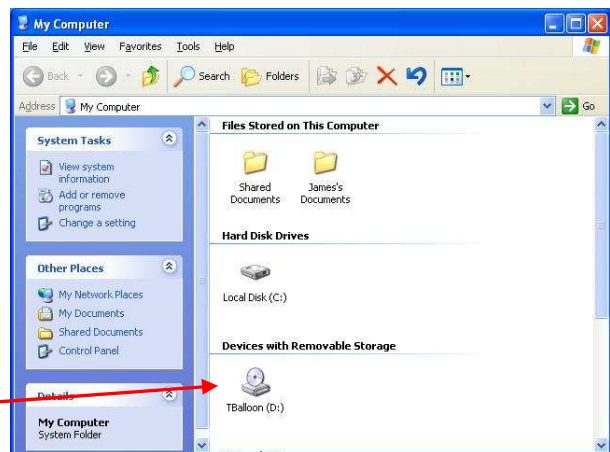
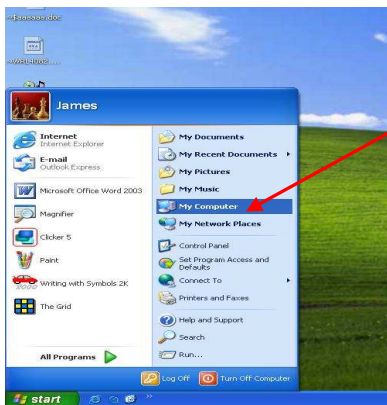


If you are reading this page then the setup screen did not appear when you inserted your CD into your computer. These next few steps will show you how to start the setup manually.

Step 1:

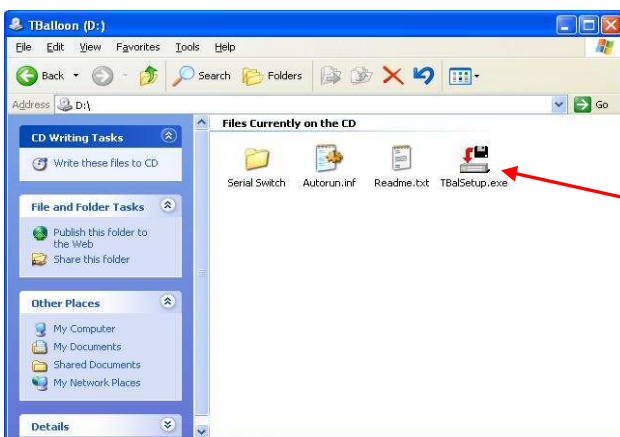
Double click on the *My Computer* icon in the top left hand corner of your screen.

If you do not see this icon then please click the *Start* button in the bottom left hand corner of the screen and then select *My Computer* from the menu.



Step 2:

The My Computer Window will now open. Double click on the picture of the CD Rom which you inserted your CD into. In some cases this will start your installation automatically. If so, return to the front of this guide, if not please follow Step 3.



Step 3:

The CD Window may now open. This shows all the information stored on the CD. To install your software you must double click on the "Setup.exe" file.

Step 4:

You may now turn to the beginning of this guide for a walk through on installing the software.